

MICROBES IDENTIFICATION CHART

Microorganisms found in soil, compost, compost tea and pond water



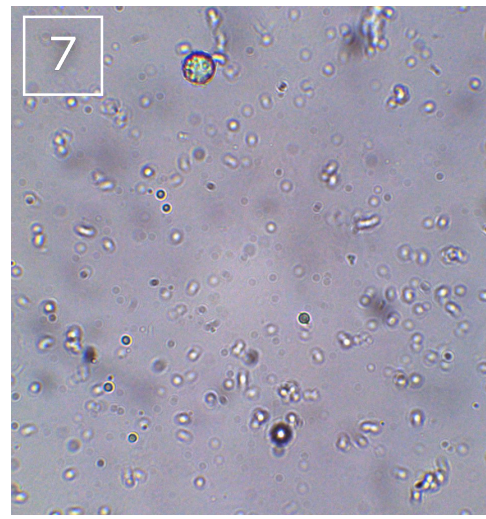
branched fungi



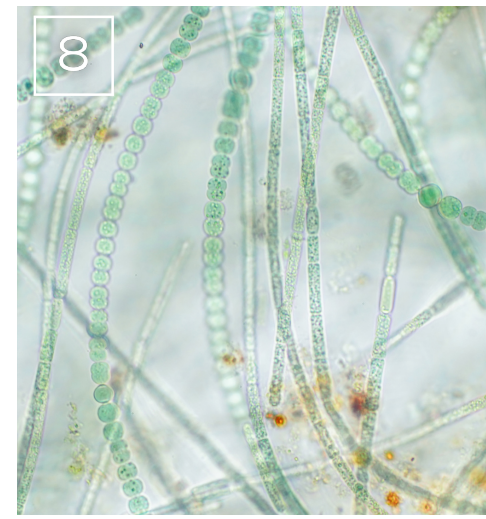
ciliate



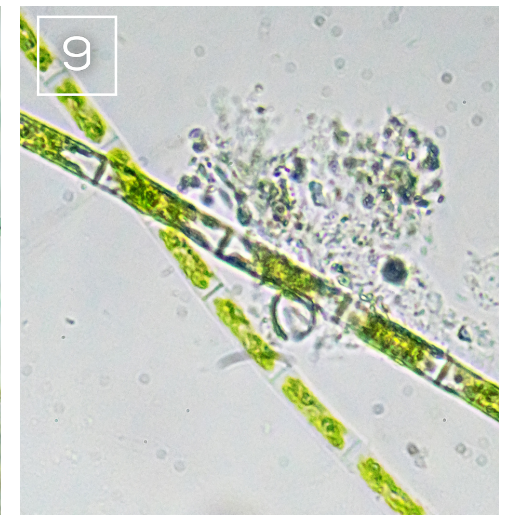
clear fungi



cocci bacteria



cyanobacteria



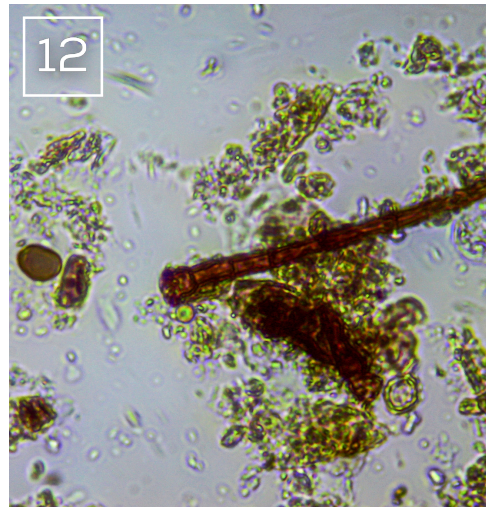
cyanobacteria



fungal hyphae



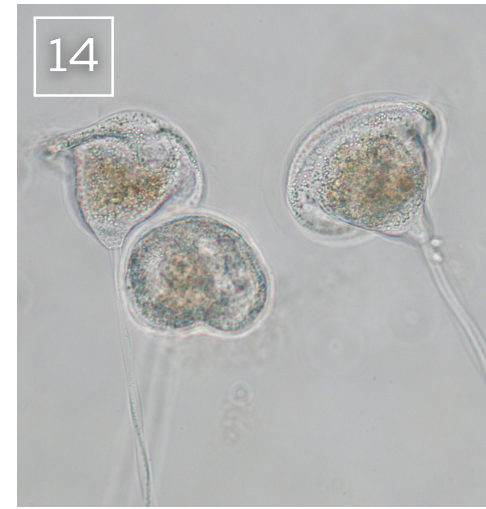
fungal hyphae



fungi



fungi with septa



loxodes vorax



mosquito larvae



moulting nematode



naked amoebae



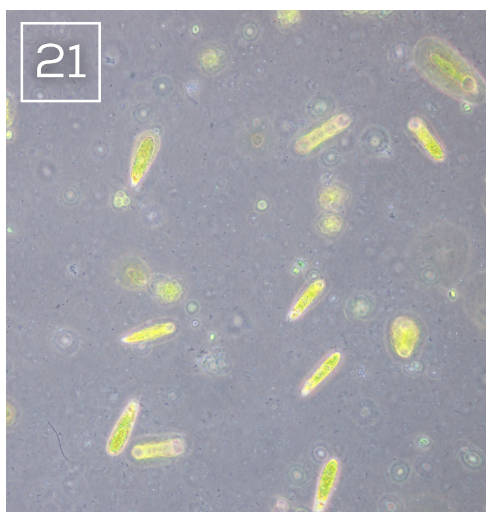
nematode



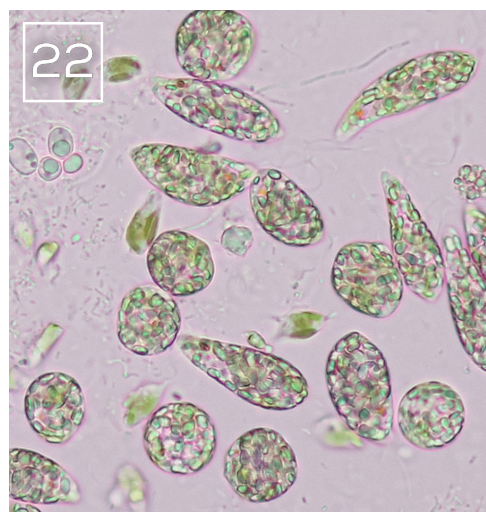
predatory nematode



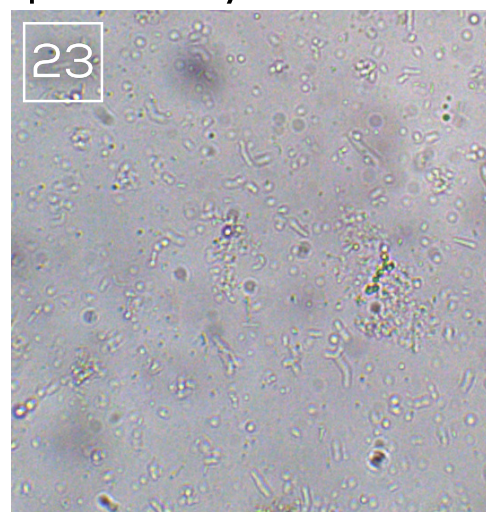
protozoa



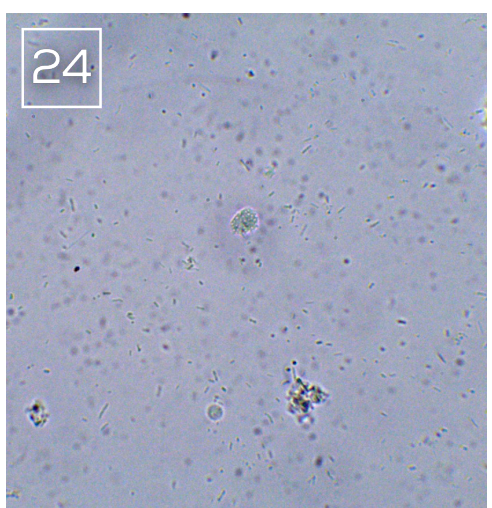
protozoa



protozoa



rod bacteria



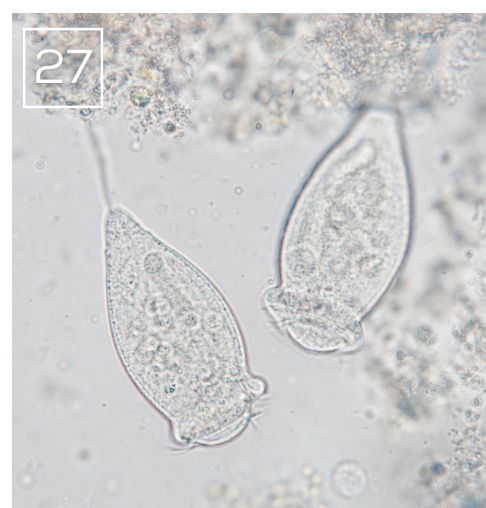
rod bacteria



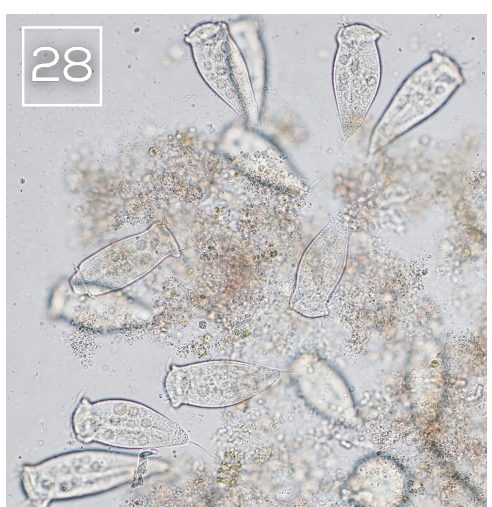
rotifer



rotifer



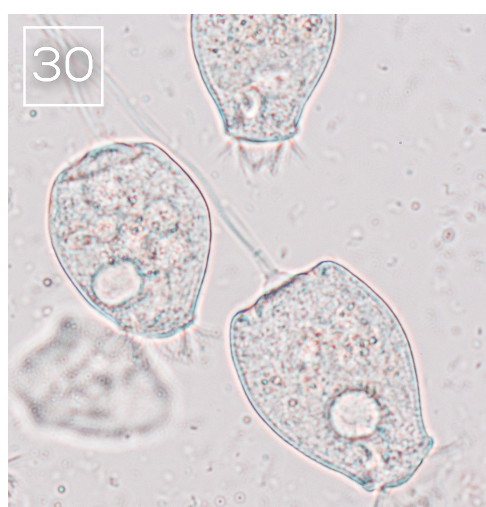
stalked ciliates



stalked ciliates



testate amoebae



vorticella



water flea

Use Code CHART2020 to get 10% OFF our bestselling Optico XSZ-107T microscope. Save at: compostteabrewing.com.au



Acknowledgements
This poster has been created by The Compost Tea Brewing Company and is published by Aunet Pty Ltd. It is designed to help farmers and gardeners to quickly identify microbes in their soil, compost tea and pond water. All photographs used have been purchased from Shutterstock and Bigstock photography websites. Standard licences have been purchased for usage in print. Images 4-7, 13, 16-19, 23, 24 and 29 have been provided by Earthwhile Australia: www.earthwhileaustralia.com
This poster may not be reproduced or copied in any form without the permission of the publisher: www.aunet.com.au
For more information, please visit our website: www.compostteabrewing.com.au